

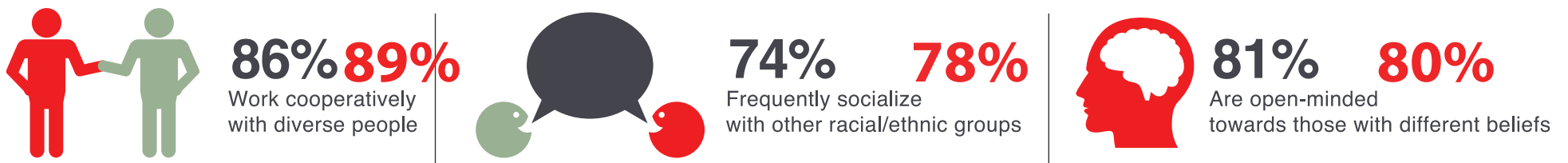
# THE AMERICAN FRESHMAN

FALL ★ 2014

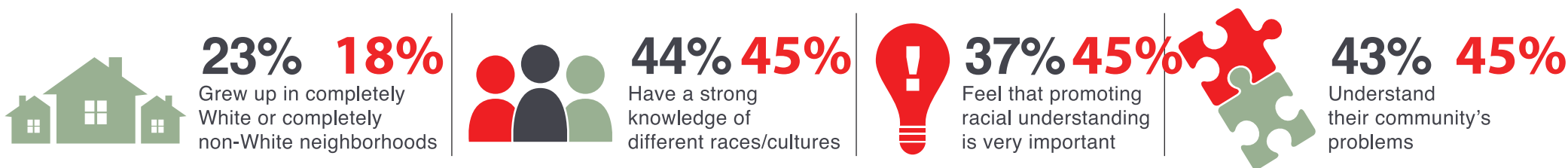
National results are shown in BLACK | **CSU Monterey Bay** results are shown in RED

Students arrive on campus with a range of skills and abilities to be successful in college and in life. Below is a snapshot of some experiences and expectations students bring with them to college and areas where they may look to campus services for additional support and development.

## Students today interact with others in diverse environments.



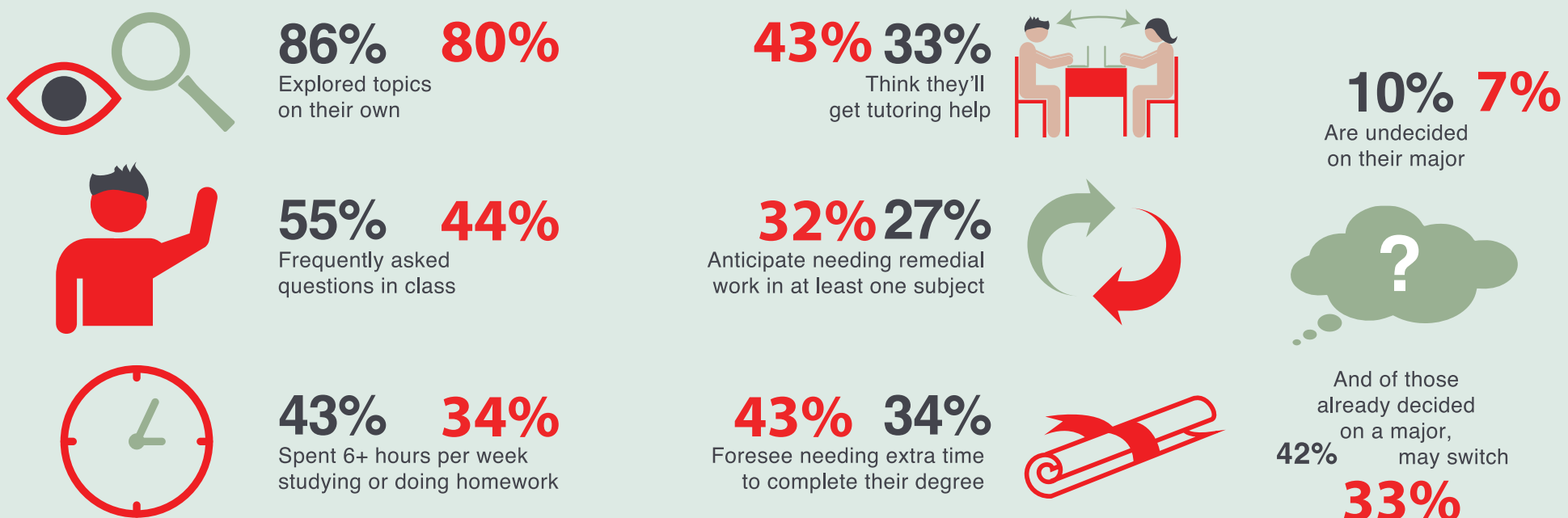
## But there is still opportunity to broaden their perspective.



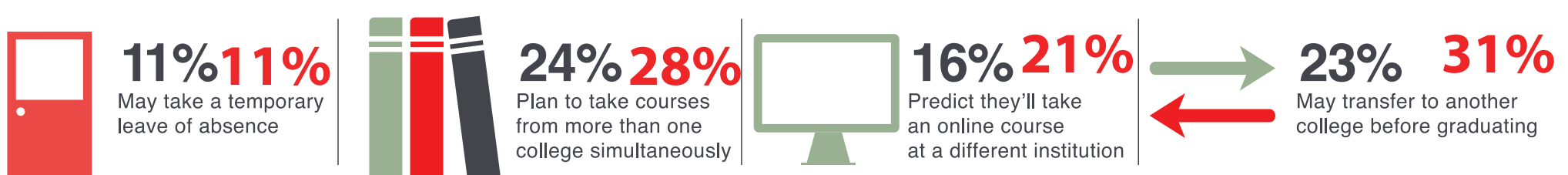
## HELP DESK

Students begin developing productive habits in high school...

...But many believe they'll need additional support and guidance in college.



## And enrollment patterns may create additional challenges.



Information about students as they enter college helps enrollment planning and retention efforts while providing a baseline for understanding college effectiveness. Register for the CIRP Freshman Survey at [www.cirpsurveys.org](http://www.cirpsurveys.org). The 2014 CIRP Freshman Survey report is available as a free download at [heri.ucla.edu/tfsPublications](http://heri.ucla.edu/tfsPublications)

Survey Source: CIRP Freshman Survey 2014

[www.heri.ucla.edu](http://www.heri.ucla.edu)

[facebook.com/HERI.CIRP](https://www.facebook.com/HERI.CIRP)

[@HERIUCLA](https://twitter.com/HERIUCLA)